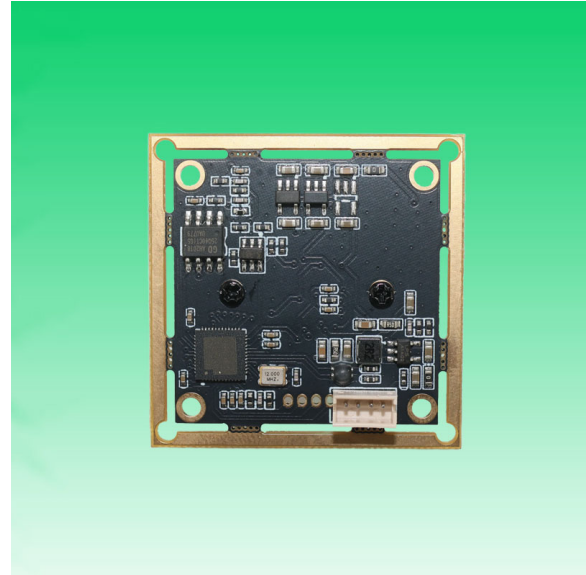


**KLT-USB-1590 V3****5MP 1590 Sony IMX335 M12 Fixed Focus USB 3.0 Camera Module**

KLT-USB-1590 V3 is a 5MP Fixed Focus USB camera module based on 1/2.8" IMX335 image sensor. It delivers high-speed, 2K resolution ultra sharp image. The S-mount (M12) lens holder enables customers to choose different lens as per varies applications. This camera module is ideal solution for face recognition, identity detection, access control.

**Key Features**

- 2K resolution (2592 x 1944) Sony IMX335 sensor
- High speed USB 2.0 Plug and Play
- MJPEG output format
- Low power consumption
- Compact size
- UVC compliant to Windows, Linux, OS with UVC driver
- USB OTG (On-The-Go) support

**KLT-USB-1590 V3****5MP 1590 Sony IMX335 M12 Fixed Focus USB 3.0 Camera Module**

<b>Camera Module No.</b>	<b>KLT-USB-1590 V3</b>
<b>Resolution</b>	5MP
<b>Image Sensor</b>	IMX335
<b>Sensor Type</b>	1/2.8"
<b>Pixel Size</b>	2.0 $\mu\text{m}$ x 2.0 $\mu\text{m}$
<b>EFL</b>	2.67 mm
<b>F.NO</b>	2.00
<b>Pixel</b>	2592 x 1944
<b>View Angle</b>	167.0°(DFOV) 122.0°(HFOV) 90.0°(VFOV)
<b>Lens Dimensions</b>	13.10 x 13.10 x 18.40 mm
<b>Module Type</b>	Fixed Focus
<b>Interface</b>	USB 2.0
<b>Output Format</b>	MJPEG / YUV2
<b>Auto Control</b>	Saturation, Contrast, Acutance White Balance, Exposure
<b>Audio</b>	Digital Microphone, Single, Dual Channel
<b>Input Voltage</b>	DC 5V
<b>Working Current</b>	Max 500mA
<b>PCB Size</b>	38mm x 38mm / 32mm x 32mm
<b>System Compatibility</b>	Windows XP (SP2, SP3), Vista, 7, 8, 10, 11 Android, Mac OS, Linux or OS with UVC Driver Raspberry Pi by USB Port
<b>Software for USB Camera</b>	AMCAP, Webcam Viewer, V4L2 Controls Contacam, VLC Player, MotionEye OS iSpy, ZoneMider, Yawcam
<b>Lens Type</b>	650nm IR Cut
<b>Operating Temperature</b>	-30°C to +85°C
<b>USB Cable</b>	USB Cable

Wide Compatibility with Windows, Android, Mac OS, Linux, or Raspberry Pi



**KLT-USB-1590 V3****5MP 1590 Sony IMX335 M12 Fixed Focus USB 3.0 Camera Module**

Top View



Side View



Bottom View



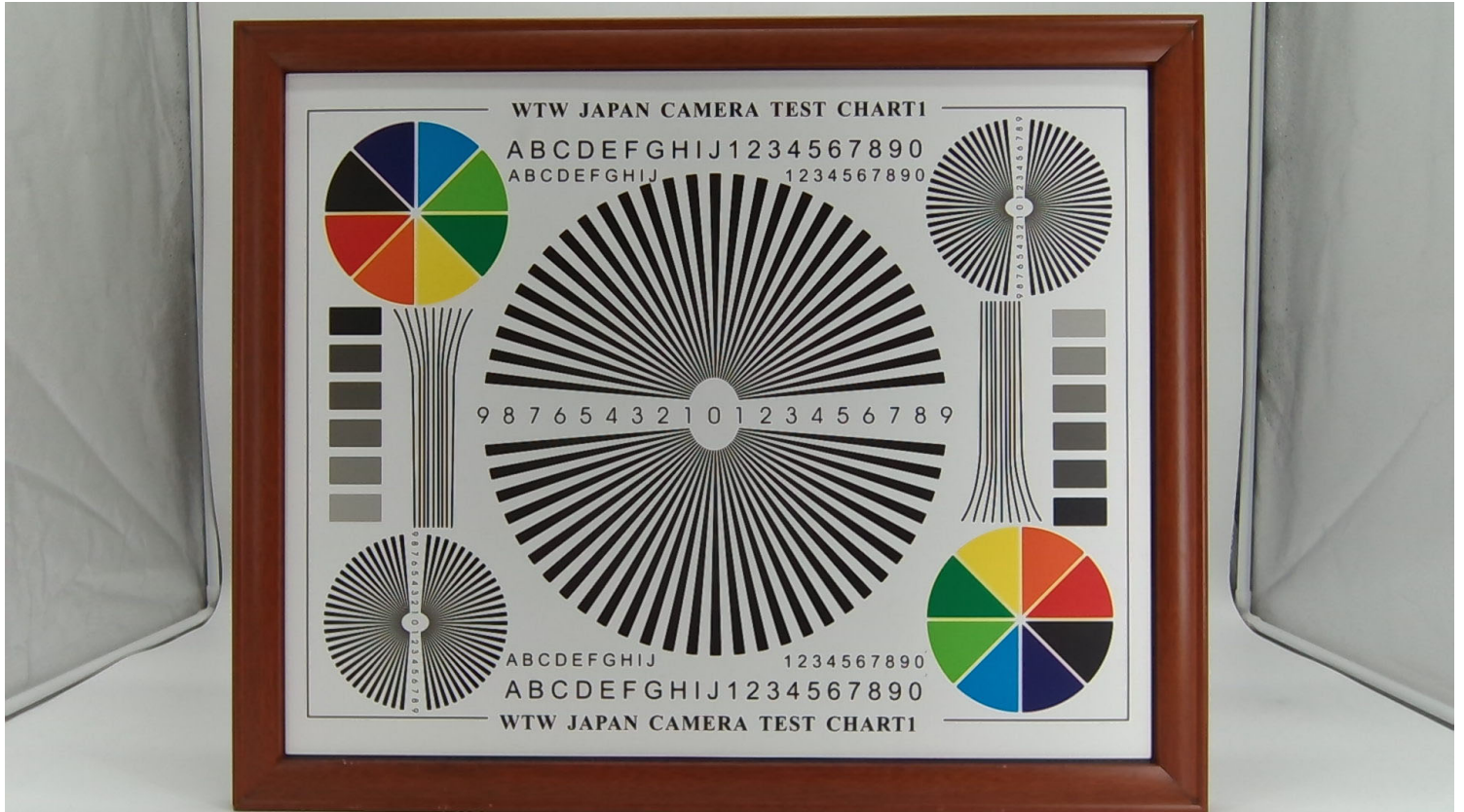
USB Cable

**KLT-USB-1590 V3****5MP 1590 Sony IMX335 M12 Fixed Focus USB 3.0 Camera Module**

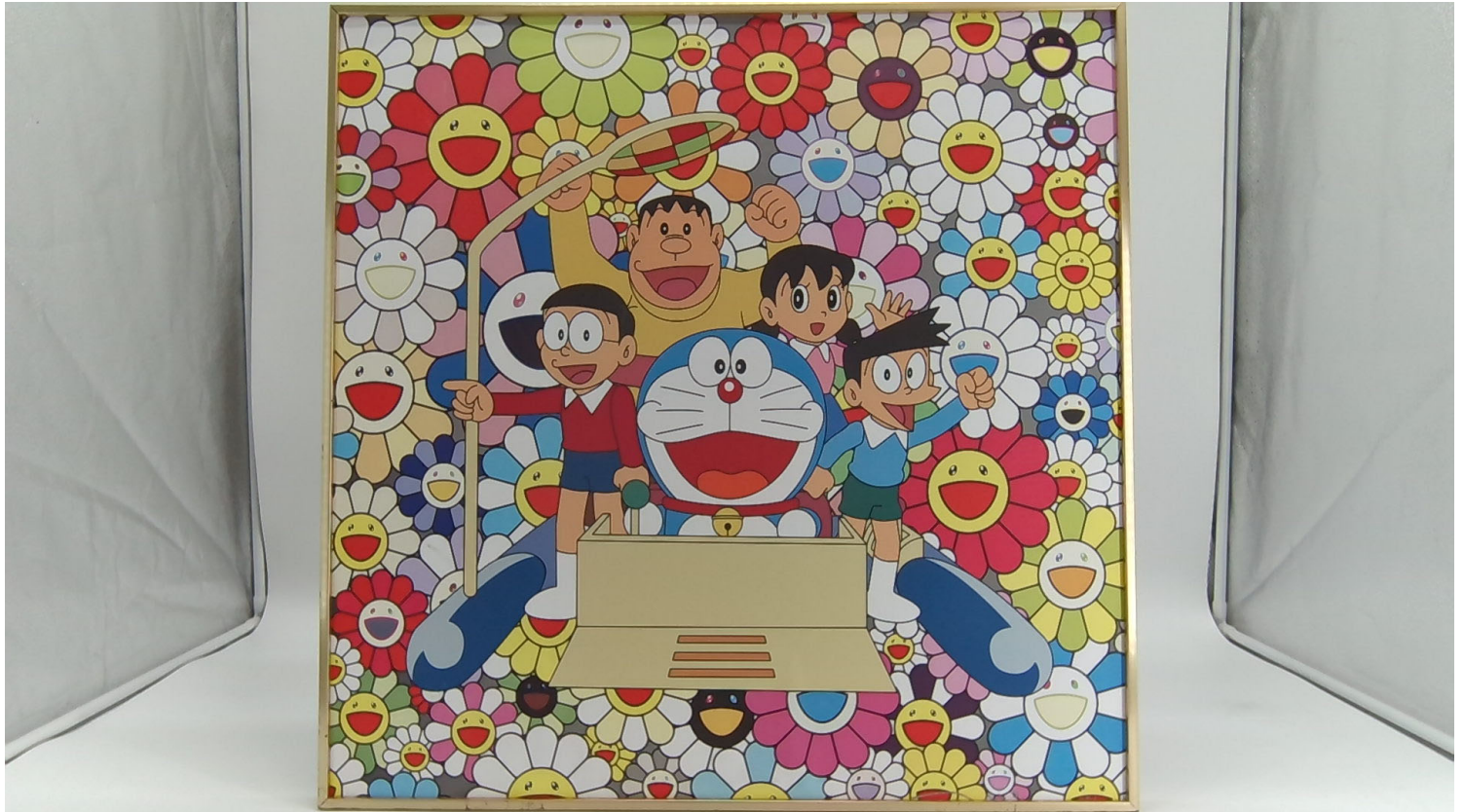
FORMAT	RESOLUTION	FRAME RATE
		USB 3.0
MJPEG	640 x 480 (VGA)	30 FPS
	1280 x 720 (720P)	30 FPS
	1920 x 1080 (1080P)	30 FPS
	2592 x 1944 (5MP)	20 FPS















GROUP

1 1.008  
**H**  
Hydrogen

3 6.941  
**Li**  
Lithium

11 22.99  
**Na**  
Sodium

PERIOD

19 39.09  
**K**  
Potassium

37 85.47  
**Rb**  
Rubidium

55 132.9  
**Cs**  
Cesium

87 (223)  
**Fr**  
Francium

4 9.01  
**Be**  
Beryllium

12 24.31  
**Mg**  
Magnesium

20 40.08  
**Ca**  
Calcium

38 87.62  
**Sr**  
Strontium

56 137.3  
**Ba**  
Barium

88 (226)  
**Ra**  
Radium

88 (226)  
**Ra**  
Radium

5 10.81  
**B**  
Boron

13 26.98  
**Al**  
Aluminum

21 40.08  
**Sc**  
Scandium

39 88.91  
**Y**  
Yttrium

57 (138.9)  
**La**  
Lanthanum

89 (138.9)  
**La**  
Lanthanum

6 12.01  
**C**  
Carbon

14 28.08  
**Si**  
Silicon

22 47.87  
**Ti**  
Titanium

40 91.22  
**Zr**  
Zirconium

58 137.3  
**Hf**  
Hafnium

90 (231)  
**Th**  
Thorium

7 14.01  
**N**  
Nitrogen

15 30.97  
**P**  
Phosphorus

23 50.94  
**V**  
Vanadium

41 92.91  
**Nb**  
Niobium

59 180.9  
**Ta**  
Tantalum

91 (231)  
**Pa**  
Protactinium

8 15.99  
**O**  
Oxygen

16 32.07  
**S**  
Sulfur

24 51.99  
**Cr**  
Chromium

42 95.94  
**Mo**  
Molybdenum

60 140.9  
**Pr**  
Praseodymium

92 (238)  
**U**  
Uranium

9 18.99  
**F**  
Fluorine

17 35.45  
**Cl**  
Chlorine

25 54.94  
**Mn**  
Manganese

43 92.91  
**Tc**  
Technetium

61 140.9  
**Ce**  
Cerium

93 (238)  
**Np**  
Neptunium

10 20.18  
**Ne**  
Neon

18 39.95  
**Ar**  
Argon

26 55.85  
**Fe**  
Iron

44 101.1  
**Ru**  
Ruthenium

62 150.4  
**Sm**  
Samarium

94 (239)  
**Pu**  
Plutonium

11 20.18  
**Ne**  
Neon

19 39.95  
**Ar**  
Argon

27 58.93  
**Co**  
Cobalt

45 102.9  
**Rh**  
Rhodium

63 151.9  
**Eu**  
Europium

95 (243)  
**Am**  
Americium

12 20.18  
**Ne**  
Neon

18 39.95  
**Ar**  
Argon

28 58.69  
**Ni**  
Nickel

46 106.4  
**Rd**  
Radium

64 157.2  
**Gd**  
Gadolinium

96 (247)  
**Cm**  
Curium

13 26.98  
**Al**  
Aluminum

21 40.08  
**Sc**  
Scandium

29 63.55  
**Cu**  
Copper

47 107.9  
**Ag**  
Silver

65 162.5  
**Tb**  
Terbium

97 (252)  
**Bk**  
Berkelium

14 28.08  
**Si**  
Silicon

22 47.87  
**Ti**  
Titanium

30 65.39  
**Zn**  
Zinc

48 112.4  
**Cd**  
Cadmium

66 167.3  
**Dy**  
Dysprosium

98 (251)  
**Cf**  
Californium

15 30.97  
**P**  
Phosphorus

23 50.94  
**V**  
Vanadium

31 69.72  
**Ga**  
Gallium

49 114.8  
**In**  
Indium

67 164.9  
**Ho**  
Holmium

99 (252)  
**Es**  
Einsteinium

16 32.07  
**S**  
Sulfur

24 51.99  
**Cr**  
Chromium

32 72.61  
**Ge**  
Germanium

50 118.7  
**Sn**  
Tin

68 167.2  
**Er**  
Erbium

100 (257)  
**Fm**  
Fermium

17 35.45  
**Cl**  
Chlorine

25 54.94  
**Mn**  
Manganese

33 74.92  
**As**  
Arsenic

51 121.8  
**Sb**  
Antimony

69 168.9  
**Tm**  
Thulium

101 (258)  
**Md**  
Mendelevium

18 39.95  
**Ar**  
Argon

26 55.85  
**Fe**  
Iron

34 78.96  
**Se**  
Selenium

52 127.6  
**Te**  
Tellurium

70 173.1  
**Yb**  
Ytterbium

103 (260)  
**Lr**  
Lawrencium

19 39.95  
**Ar**  
Argon

27 58.93  
**Co**  
Cobalt

35 78.96  
**Br**  
Bromine

53 126.9  
**I**  
Iodine

71 174.9  
**Lu**  
Lutetium

105 (260)  
**Lr**  
Lawrencium

20 40.08  
**Ca**  
Calcium

28 58.69  
**Ni**  
Nickel

36 79.90  
**Kr**  
Krypton

54 131.3  
**Xe**  
Xenon

72 171.9  
**Lu**  
Lutetium

107 (261)  
**Lr**  
Lawrencium

21 40.08  
**Sc**  
Scandium

29 63.55  
**Cu**  
Copper

37 79.90  
**Kr**  
Krypton

55 131.3  
**Xe**  
Xenon

73 174.9  
**Lu**  
Lutetium

109 (262)  
**Lr**  
Lawrencium

22 47.87  
**Ti**  
Titanium

30 65.39  
**Zn**  
Zinc

38 79.90  
**Kr**  
Krypton

56 131.3  
**Xe**  
Xenon

74 175.9  
**Lu**  
Lutetium

111 (264)  
**Lr**  
Lawrencium

23 50.94  
**V**  
Vanadium

31 69.72  
**Ga**  
Gallium

39 79.90  
**Kr**  
Krypton

57 131.3  
**Xe**  
Xenon

75 176.9  
**Lu**  
Lutetium

113 (264)  
**Lr**  
Lawrencium

57 138.9  
**La**  
Lanthanum

89 (226)  
**Ac**  
Actinium

58 140.1  
**Ce**  
Cerium

90 (232)  
**Th**  
Thorium

59 140.9  
**Pr**  
Praseodymium

91 (231)  
**Pa**  
Protactinium

60 144.2  
**Nd**  
Neodymium

92 (238)  
**U**  
Uranium

61 145  
**Pm**  
Promethium

93 (239)  
**Np**  
Neptunium

62 150.4  
**Sm**  
Samarium

94 (239)  
**Pu**  
Plutonium

63 151.9  
**Eu**  
Europium

95 (243)  
**Am**  
Americium

64 157.2  
**Gd**  
Gadolinium

96 (247)  
**Cm**  
Curium

65 162.5  
**Tb**  
Terbium

97 (252)  
**Bk**  
Berkelium

66 167.3  
**Dy**  
Dysprosium

98 (251)  
**Cf**  
Californium

67 168.9  
**Ho**  
Holmium

99 (252)  
**Es**  
Einsteinium

68 169  
**Er**  
Erbium

100 (257)  
**Fm**  
Fermium

69 170.9  
**Tm**  
Thulium

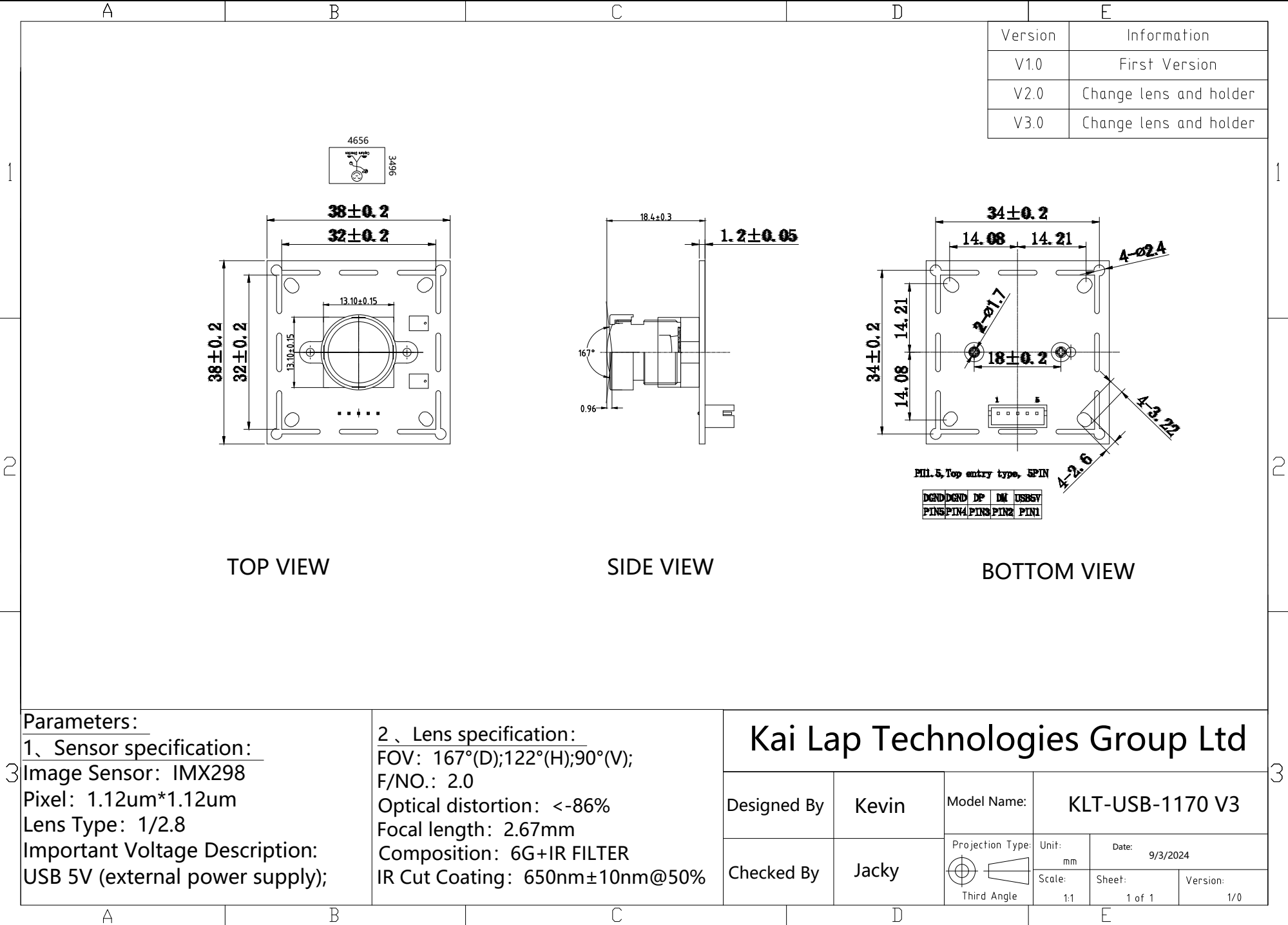
101 (258)  
**Md**  
Mendelevium

70 173.1  
**Yb**  
Ytterbium

102 (259)  
**No**  
Nobelium

71 174.9  
**Lu**  
Lutetium

103 (260)  
**Lr**  
Lawrencium





## [Product Information]

Ver.1.0

# IMX335LLN

Diagonal 6.52 mm (Type 1 / 2.8) CMOS Solid-state Image Sensor with Square Pixel for Monochrome Cameras

### Description

The IMX335LLN is a diagonal 6.52 mm (Type 1 / 2.8) CMOS active pixel type solid-state image sensor with a square pixel array and 5.14 M effective pixels. This chip operates with analog 2.9 V, digital 1.2 V, and interface 1.8 V triple power supply, and has low power consumption. High sensitivity, low dark current and no smear are achieved. This chip features an electronic shutter with variable charge-integration time.

(Applications: Surveillance cameras, FA cameras, Industrial cameras)

### Features

- ◆ CMOS active pixel type dots
- ◆ Built-in timing adjustment circuit, H/V driver and serial communication circuit
- ◆ Input frequency: 6 to 27 MHz / 37.125 MHz / 74.25 MHz
- ◆ Number of recommended recording pixels: 2592 (H) × 1944 (V) approx. 5.04 M pixels
- ◆ Readout mode
  - All-pixel scan mode
  - Window cropping mode
  - Vertical / Horizontal direction-normal / inverted readout mode
- ◆ Readout rate
  - Maximum frame rate in All-pixel scan mode 2592(H) × 1944(V) A/D 10-bit : 60 frame/s
- ◆ High dynamic range (HDR) function
  - Multiple exposure HDR
  - Digital overlap HDR
- ◆ Variable-speed shutter function (resolution 1H units)
- ◆ 10-bit / 12-bit A/D converter
- ◆ CDS / PGA function
  - 0 dB to 30 dB : Analog Gain 30 dB (step pitch 0.3 dB)
  - 30.3 dB to 72 dB : Analog Gain 30 dB + Digital Gain 0.3 to 42 dB (step pitch 0.3 dB)
- ◆ Supports I/O
  - CSI-2 serial data output ( 2 Lane / 4 Lane, RAW10 / RAW12 output)
- ◆ Recommended exit pupil distance: -100 mm to  $-\infty$

### STARVIS

\* STARVIS is a trademark of Sony Corporation. The STARVIS is back-illuminated pixel technology used in CMOS image sensors for surveillance camera applications. It features a sensitivity of 2000 mV or more per  $1 \mu\text{m}^2$  (color product, when imaging with a 706 cd/m<sup>2</sup> light source, F5.6 in 1 s accumulation equivalent), and realizes high picture quality in the visible-light and near infrared light regions.

Sony reserves the right to change products and specifications without prior notice.

Sony logo is a registered trademark of Sony Corporation.

## Device Structure

◆ CMOS image sensor	
◆ Image size	Type 1/2.8
◆ Total number of pixels	2704 (H) × 2104 (V) approx. 5.69 M pixels
◆ Number of effective pixels	2616 (H) × 1964 (V) approx. 5.14 M pixels
◆ Number of active pixels	2616 (H) × 1960 (V) approx. 5.13 M pixels
◆ Number of recommended recording pixels	2592 (H) × 1944 (V) approx. 5.04 M pixels
◆ Unit cell size	2.0 μm (H) × 2.0 μm (V)
◆ Optical black	Horizontal (H) direction: Front 0 pixel, rear 0 pixel Vertical (V) direction: Front 13 pixels, rear 0 pixel
◆ Dummy	Horizontal (H) direction: Front 0 pixel, rear 0 pixel Vertical (V) direction: Front 0 pixel, rear 0 pixel
◆ Package	88 pin BGA

## Image Sensor Characteristics

(T<sub>j</sub> = 60 °C)

Item		Value	Remarks
Sensitivity (F8)	Typ.	1961 Digit	1/30 s accumulation 12 bit converted value
Saturation signal	Min.	3895 Digit	12 bit converted value

## Basic Drive Mode

Drive mode	Recommended number of recording pixels	Maximum frame rate [frame/s]	Output interface	ADC [bit]
All pixel	2592 (H) × 1944 (V) approx. 5.04 M pixels	60	CSI-2	10



## [Product Information]

Ver.1.1

# IMX335LQN

Diagonal 6.52 mm (Type 1/2.8) CMOS Solid-state Image Sensor with Square Pixel for Color Cameras

### Description

The IMX335LQN is a diagonal 6.52 mm (Type 1/2.8) CMOS active pixel type solid-state image sensor with a square pixel array and 5.14 M effective pixels. This chip operates with analog 2.9 V, digital 1.2 V, and interface 1.8 V triple power supply, and has low power consumption. High sensitivity, low dark current and no smear are achieved through the adoption of R, G and B primary color mosaic filters. This chip features an electronic shutter with variable charge-integration time.

(Applications: Surveillance cameras, FA cameras, Industrial cameras)

### Features

- ◆ CMOS active pixel type dots
- ◆ Built-in timing adjustment circuit, H/V driver and serial communication circuit
- ◆ Input frequency: 6 to 27 MHz / 37.125 MHz / 74.25 MHz
- ◆ Number of recommended recording pixels: 2592 (H) × 1944 (V) approx. 5.04 M pixels
- ◆ Readout mode
  - All-pixel scan mode
  - Horizontal/Vertical 2/2-line binning mode
  - Window cropping mode
  - Vertical / Horizontal direction-normal / inverted readout mode
- ◆ Readout rate
  - Maximum frame rate in All-pixel scan mode 2592 (H) × 1944 (V) A/D 10-bit : 60 frame/s
- ◆ High dynamic range (HDR) function
  - Multiple exposure HDR
  - Digital overlap HDR
- ◆ Variable-speed shutter function (resolution 1H units)
- ◆ 10-bit / 12-bit A/D converter
- ◆ CDS / PGA function
  - 0 dB to 30 dB : Analog Gain 30 dB (step pitch 0.3 dB)
  - 30.3 dB to 72 dB : Analog Gain 30 dB + Digital Gain 0.3 to 42 dB (step pitch 0.3 dB)
- ◆ Supports I/O
  - CSI-2 serial data output ( 2 Lane / 4 Lane, RAW10 / RAW12 output)
- ◆ Recommended exit pupil distance: -30 mm to  $-\infty$

### STARVIS

\* STARVIS is a trademark of Sony Corporation. The STARVIS is back-illuminated pixel technology used in CMOS image sensors for surveillance camera applications. It features a sensitivity of 2000 mV or more per  $1 \mu\text{m}^2$  (color product, when imaging with a 706 cd/m<sup>2</sup> light source, F5.6 in 1 s accumulation equivalent), and realizes high picture quality in the visible-light and near infrared light regions.

Sony reserves the right to change products and specifications without prior notice.

Sony logo is a registered trademark of Sony Corporation.

## Device Structure

◆ CMOS image sensor	
◆ Image size	Type 1/2.8
◆ Total number of pixels	2704 (H) × 2104 (V) approx. 5.69 M pixels
◆ Number of effective pixels	2616 (H) × 1964 (V) approx. 5.14 M pixels
◆ Number of active pixels	2616 (H) × 1960 (V) approx. 5.11 M pixels
◆ Number of recommended recording pixels	2592 (H) × 1944 (V) approx. 5.04 M pixels
◆ Unit cell size	2.0 μm (H) × 2.0 μm (V)
◆ Optical black	Horizontal (H) direction: Front 0 pixel, rear 0 pixel Vertical (V) direction: Front 13 pixels, rear 0 pixel
◆ Dummy	Horizontal (H) direction: Front 0 pixel, rear 0 pixel Vertical (V) direction: Front 0 pixel, rear 0 pixel
◆ Package	88 pin CSP BGA

## Image Sensor Characteristics

(T<sub>j</sub> = 60 °C)

Item		Value	Remarks
Sensitivity (F5.6)	Typ.	2200 Digit	1/30 s accumulation 12 bit converted value
Saturation signal	Min.	3895 Digit	12 bit converted value

## Basic Drive Mode

Drive mode	Recommended number of recording pixels	Maximum frame rate [frame/s]	Output interface	ADC [bit]
All pixel	2592 (H) × 1944 (V) approx. 5.04 M pixels	60	CSI-2	10
Horizontal/ Vertical 2/2-line binning	1296 (H) × 972 (V) approx. 1.26 M pixels	60	CSI-2	10



## Cameras Applications



Automotive Driver Pilot



Live Streaming



Video Conference



Eye Tracker Biometric Detection



Machine Vision



Agricultural Monitor



Night Vision Security



Drone and Sports Eagle Eyes



Interactive Pet Camera





## Cameras Applications

*your BEST camera module partner*



## IMAGING DEVICES





## Camera Module Pinout Definition Reference Chart

OmniVision Sony Samsung On-Semi Aptina Himax GalaxyCore PixArt SmartSens Sensors	
Pin Signal	Description
DGND GND	ground for digital circuit
AGND	ground for analog circuit
PCLK DCK	DVP PCLK output
XCLR PWDN XSHUTDOWN STANDBY	power down active high with internal pull-down resistor
MCLK XVCLK XCLK INCK	system input clock
RESET RST	reset active low with internal pull-up resistor
NC NULL	no connect
SDA SIO_D SIOD	SCCB data
SCL SIO_C SIOC	SCCB input clock
VSYNC XVS FSYNC	DVP VSYNC output
HREF XHS	DVP HREF output
DOVDD	power for I/O circuit
AFVDD	power for VCM circuit
AVDD	power for analog circuit
DVDD	power for digital circuit
STROBE FSTROBE	strobe output
FSIN	synchronize the VSYNC signal from the other sensor
SID	SCCB last bit ID input
ILPWM	mechanical shutter output indicator
FREX	frame exposure / mechanical shutter
GPIO	general purpose inputs
SLASEL	I2C slave address select
AFEN	CEN chip enable active high on VCM driver IC
<b>MIPI Interface</b>	
MDN0 DN0 MD0N DATA_N DMO1N	MIPI 1st data lane negative output
MDP0 DP0 MD0P DATA_P DMO1P	MIPI 1st data lane positive output
MDN1 DN1 MD1N DATA2_N DMO2N	MIPI 2nd data lane negative output
MDP1 DP1 MD1P DATA2_P DMO2P	MIPI 2nd data lane positive output
MDN2 DN2 MD2N DATA3_N DMO3N	MIPI 3rd data lane negative output
MDP2 DP2 MD2P DATA3_P DMO3P	MIPI 3rd data lane positive output
MDN3 DN3 MD3N DATA4_N DMO4N	MIPI 4th data lane negative output
MDP3 DP3 MD3P DATA4_P DMO4P	MIPI 4th data lane positive output
MCN CLKN CLK_N DCKN	MIPI clock negative output
MCP CLKP MCP CLK_P DCKN	MIPI clock positive output
<b>DVP Parallel Interface</b>	
D0 DO0 Y0	DVP data output port 0
D1 DO1 Y1	DVP data output port 1
D2 DO2 Y2	DVP data output port 2
D3 DO3 Y3	DVP data output port 3
D4 DO4 Y4	DVP data output port 4
D5 DO5 Y5	DVP data output port 5
D6 DO6 Y6	DVP data output port 6
D7 DO7 Y7	DVP data output port 7
D8 DO8 Y8	DVP data output port 8
D9 DO9 Y9	DVP data output port 9
D10 DO10 Y10	DVP data output port 10
D11 DO11 Y11	DVP data output port 11

## Camera Reliability Test

Reliability Inspection Item			Testing Method	Acceptance Criteria
Category		Item		
Environmental	Storage Temperature	High 60°C 96 Hours	Temperature Chamber	No Abnormal Situation
		Low -20°C 96 Hours	Temperature Chamber	No Abnormal Situation
	Operation Temperature	High 60°C 24 Hours	Temperature Chamber	No Abnormal Situation
		Low -20°C 24 Hours	Temperature Chamber	No Abnormal Situation
	Humidity	60°C 80% 24 Hours	Temperature Chamber	No Abnormal Situation
	Thermal Shock	High 60°C 0.5 Hours Low -20°C 0.5 Hours Cycling in 24 Hours	Temperature Chamber	No Abnormal Situation
Physical	Drop Test (Free Falling)	Without Package 60cm	10 Times on Wood Floor	Electrically Functional
		With Package 60cm	10 Times on Wood Floor	Electrically Functional
	Vibration Test	50Hz X-Axis 2mm 30min	Vibration Table	Electrically Functional
		50Hz Y-Axis 2mm 30min	Vibration Table	Electrically Functional
		50Hz Z-Axis 2mm 30min	Vibration Table	Electrically Functional
	Cable Tensile Strength Test	Loading Weight 4 kg 60 Seconds Cycling in 24 Hours	Tensile Testing Machine	Electrically Functional
Electrical	ESD Test	Contact Discharge 2 KV	ESD Testing Machine	Electrically Functional
		Air Discharge 4 KV	ESD Testing Machine	Electrically Functional
	Aging Test	On/Off 30 Seconds Cycling in 24 Hours	Power Switch	Electrically Functional
	USB Connector	On/Off 250 Times	Plug and Unplug	Electrically Functional



Inspection Item			Inspection Method	Standard of Inspection	
Category		Item			
Appearance	FPC/ PCB	Color	The Naked Eye	Major Difference is Not Allowed.	
		Be Torn/Chopped	The Naked Eye	Copper Crack Exposure is Not Allowed.	
		Marking	The Naked Eye	Clear, Recognizable (Within 30cm Distance)	
	Holder	Scratches	The Naked Eye	The Inside Crack Exposure is Not Allowed	
		Gap	The Naked Eye	Meet the Height Standard	
		Screw	The Naked Eye	Make Sure Screws Are Presented (If Any)	
		Damage	The Naked Eye	The Inside Crack Exposure is Not Allowed	
	Lens	Scratch	The Naked Eye	No Effect On Resolution Standard	
		Contamination	The Naked Eye	No Effect On Resolution Standard	
		Oil Film	The Naked Eye	No Effect On Resolution Standard	
		Cover Tape	The Naked Eye	No Issue On Appearance.	
	Function	Image	No Communication	Test Board	Not Allowed
			Bright Pixel	Black Board	Not Allowed In the Image Center
Dark Pixel			White board	Not Allowed In the Image Center	
Blurry			The Naked Eye	Not Allowed	
No Image			The Naked Eye	Not Allowed	
Vertical Line			The Naked Eye	Not Allowed	
Horizontal Line			The Naked Eye	Not Allowed	
Light Leakage			The Naked Eye	Not Allowed	
Blinking Image			The Naked Eye	Not Allowed	
Bruise			Inspection Jig	Not Allowed	
Resolution			Chart	Follows Outgoing Inspection Chart Standard	
Color			The Naked Eye	No Issue	
Noise			The Naked Eye	Not Allowed	
Corner Dark			The Naked Eye	Less Than 100px By 100px	
Color Resolution			The Naked Eye	No Issue	
Dimension			Height	The Naked Eye	Follows Approval Data Sheet
		Width	The Naked Eye	Follows Approval Data Sheet	
		Length	The Naked Eye	Follows Approval Data Sheet	
		Overall	The Naked Eye	Follows Approval Data Sheet	



## KLT Package Solutions

KLT Camera Module



Complete with Lens Protection Film



Tray with Grid and Space



Place Cameras on the Tray



## Camera Modules Package Solution

Full Tray of Cameras



Cover Tray with Lid



Put Tray into Anti-Static Bag



Vacuum the Anti-Static Bag





## Camera Modules Package Solution

**Sealed Vacuum Bag with Labels**

**1. Model and Description 2. Quantity 3. Shipping Date 4. Caution**





## Large Order Package Solution

Place Foam Sheets Between Trays



Foam Sheets are Slightly Larger than Trays

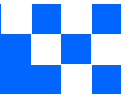


Place Foam Sheets and Trays into Box



Foam Sheets are Tightly Fitting Box





## Small Order Package Solution

Place Foam Sheets and Trays into Small Box



Foam Sheets are Nicely Fitting the Small Box



Package in Small Box for Shipment



Place Small Boxes into Larger Box





## Carbon Box Package Solution

Seal the Carbon Box

Final Package Labelled Box



### Carbon Box Ready for Shipment

1. Delivery Address and Phone No. 2. Box No. and Ship Date 3. Fragile Caution





## Sample Order Package Solution

Place Sample into Small Anti-Static Bag



Place Connectors into Small Ant-Static Bag



### Sample Labels on the Small Bag

1. Camera Module or Connector Model 2. Shipping Date and Quantity 3. Caution



## Connectors Large Order Package Solution

Connectors in a Wheel



Label Connectors in the Wheel



The Wheel is Perfectly Fitting the Box



Connectors Box Ready for Shipment







# CMOS CAMERA MODULES



*your BEST camera module partner*

## Company Kai Lap Technologies (KLT)

Kai Lap Technologies Group Limited. (KLT) was established in 2009, a next-generation technology driven manufacturer specialized in research, design, and produce of audio and video products. KLT is occupying 20,000 square feet automated plants with 100 employees of annual throughput 30,000,000 units cameras.

KLT provides OEM, ODM design, contract manufacturing, and builds the camera products. You may provide the requirements to us, even with a hand draft, our sales and engineering work together to meet your needs. We consider ourselves your last-term partner in developing practical and innovative solutions.

Our team covers everything from initial concept development to mass produced product. KLT specializes in customized camera design, raw material, electronic engineering, firmware/software development, product testing, and packing design. Our experienced strategic supply systems offer a robust and dependable manufacturing capacity for orders of various sizes.



## Limited Warranty

KLT provides the following limited warranty if you purchased the Product(s) directly from KLT company or from KLT's website, [www.KaiLapTech.com](http://www.KaiLapTech.com). Product(s) purchased from other sellers or sources are not covered by this Limited Warranty. KLT guarantees that the Product(s) will be free from defects in materials and workmanship under normal use for a period of one (1) year from the date you receive the product ("Warranty Period").

For all Product(s) that contain or develop material defects in materials or workmanship during the Warranty Period, KLT will, at its sole option, either: (i) repair the Product(s); (ii) replace the Product(s) with a new or refurbished Product(s) (replacement Product(s) being of identical model or functional equivalent); or (iii) provide you a refund of the price you paid for the Product(s).

This Limited Warranty of KLT is solely limited to repair and/or replacement on the terms set forth above. KLT is not reliable or responsible for any subsequent events.



[www.KaiLapTech.com](http://www.KaiLapTech.com) [sales@KaiLapTech.com](mailto:sales@KaiLapTech.com) Tel: (852) 6908 1256 Fax: (852) 3017 6778





# CMOS CAMERA MODULES



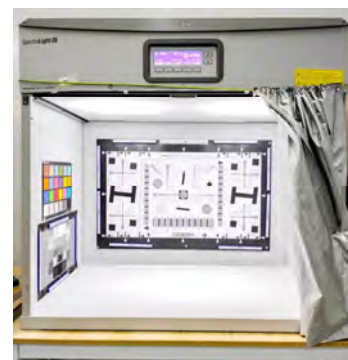
*your BEST camera module partner*

## KLT Strength

### Powerful Factory



### Professional Service



### Promised Delivery



[www.KaiLapTech.com](http://www.KaiLapTech.com) [sales@KaiLapTech.com](mailto:sales@KaiLapTech.com) Tel: (852) 6908 1256 Fax: (852) 3017 6778

All rights reserved @ Kai Lap Technologies Group Ltd. Specifications subject to change without notice.